

GEOGRAPHY

Key Words



GEOGRAPHY VOCABULARY CARDS

Keywords with pictures to trigger your memory.
A revision tool for Junior Certificate Geography.

Published by

Professional Development Service for Teachers (PDST)
Junior Certificate School Programme

Blackrock Education Centre, Kill Avenue, Dún Laoghaire, Co. Dublin
Phone: 01 2365000 Email: jcsp@pdst.ie

First Published 2016, this edition 2017

Copyright ©PDST, JCSP.

The Professional Development Service for Teachers (PDST), The Junior Certificate School Programme (JCSP), the Literacy and Numeracy Strategy, the Demonstration Library Project and the Delivering Equality of Opportunity in Schools (DEIS) Action Plan are funded by the Teacher Education Section of the Department of Education and Skills (DES).

All rights reserved.

The purpose of this publication is to enhance teaching and learning within the Junior Certificate School Programme.

No part of this publication may be reproduced, stored in a retrieval system or transmitted in any form or by any means for commercial gain without prior written permission of the publisher.

Every effort has been made to ensure that this book contains accurate information. However, PDST, JCSP, its agents and the authors shall not be liable for any loss or damage suffered by readers as a result of any information contained herein.

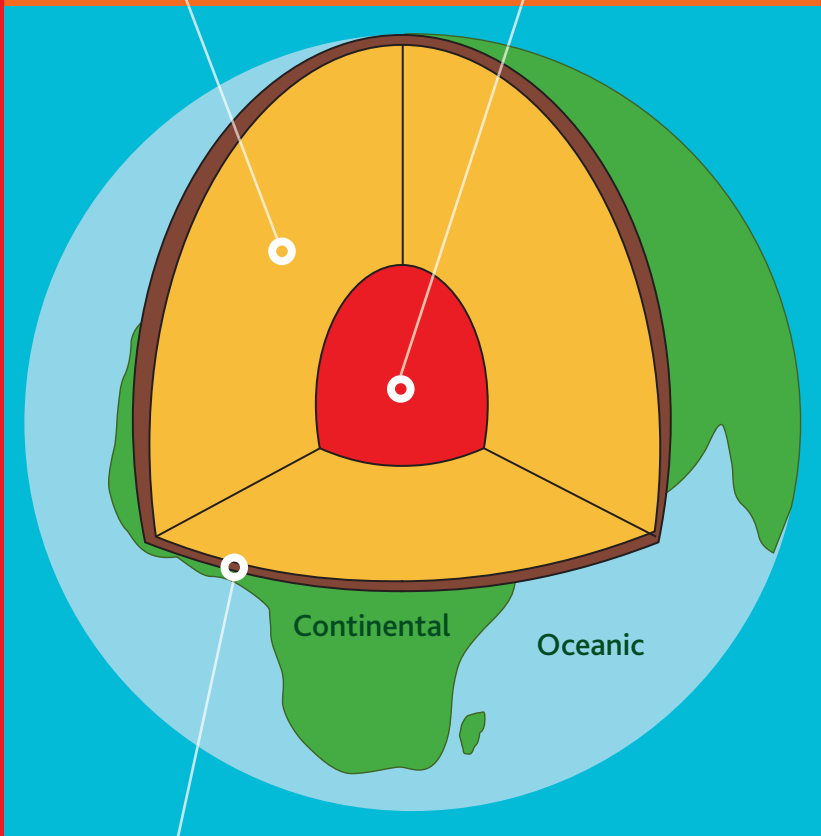
*Author: Alma Uí Fhlannchadha
Scoil Phobail Mhic Dara, Carna, Co. na Gaillimhe*

1

HOW THE EARTH IS BUILT

Mantle

Core



Crust: Continental / Oceanic

2

THE CRUST

Continental Crust

Plates

Plate Collision



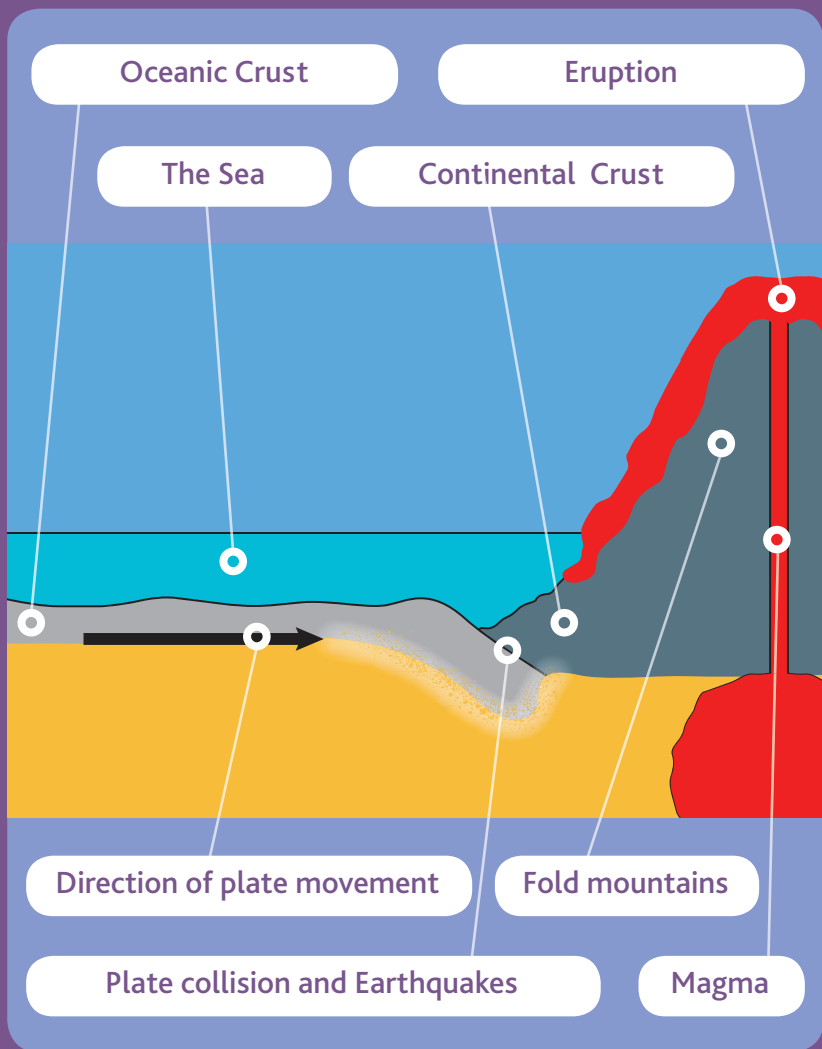
Plate Movement

Earth's Surface

Continental Drift

3

PLATE MOVEMENT



4

PLATE MOVEMENT



Colliding

Volcanic activity

Earthquakes

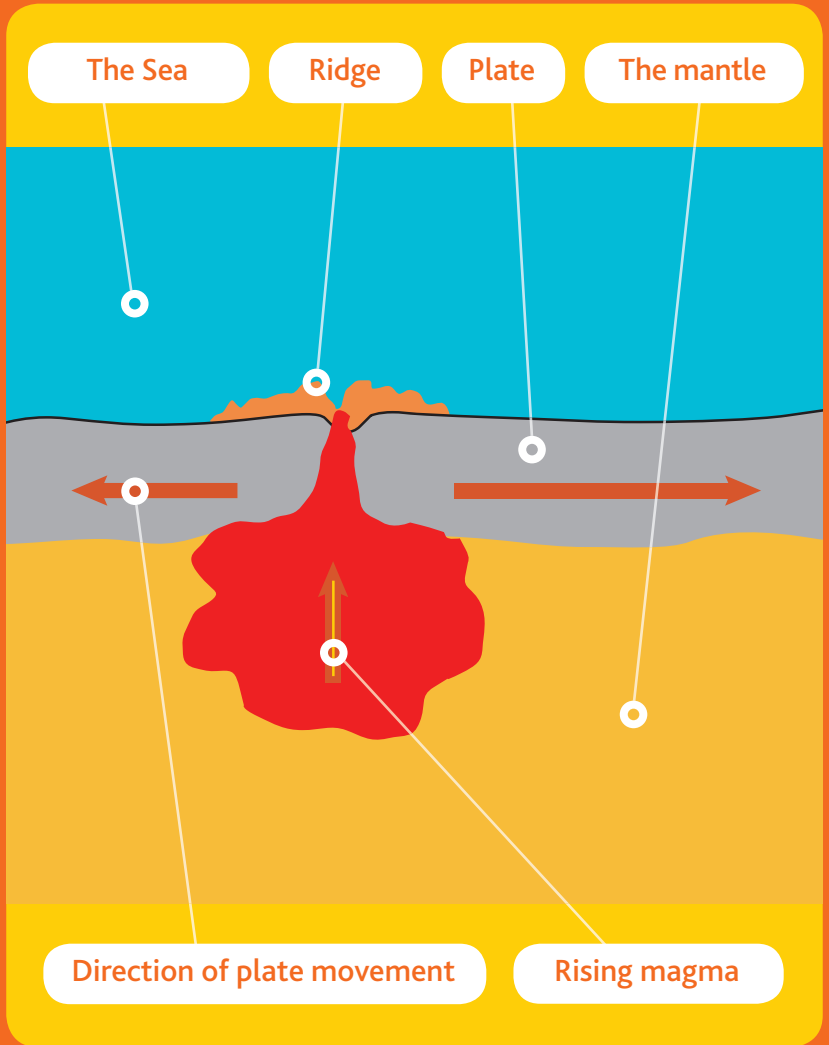
Volcanoes

Fold Mountains

Eruption

5

PLATE MOVEMENT



6

PLATE MOVEMENT

Plate Separation



Mid-Atlantic Ridge

Hot liquid rock

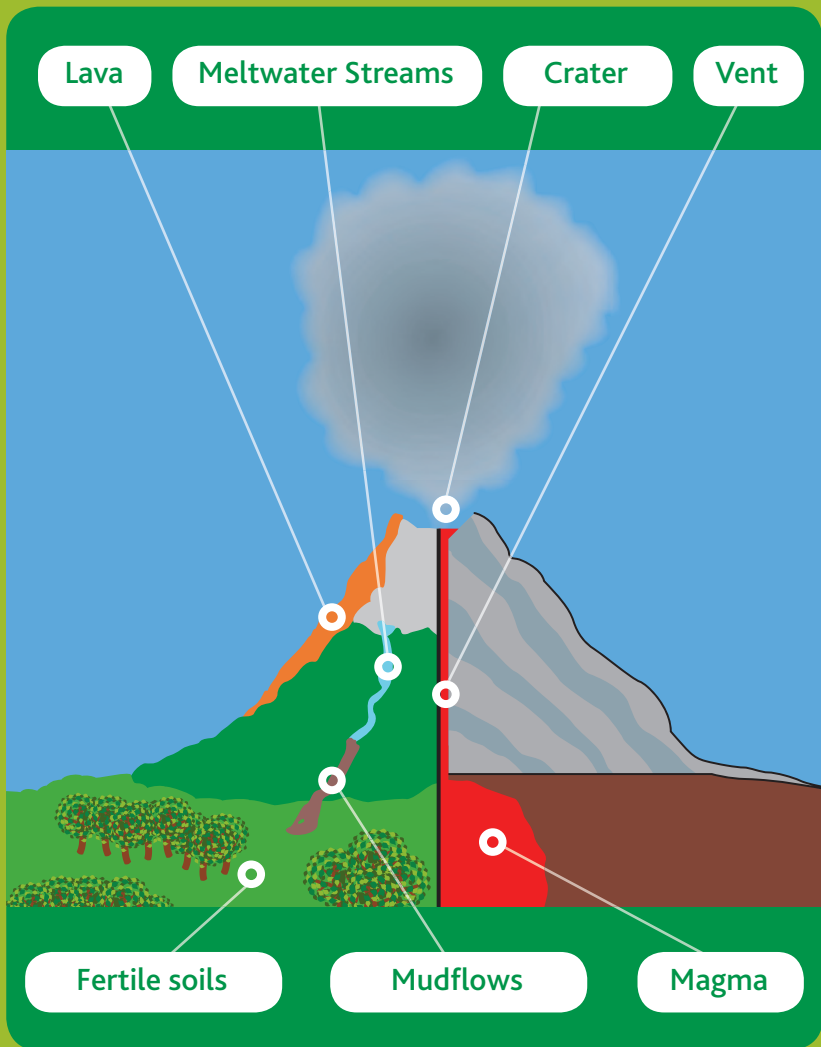
Magma

Fault

Lava

7

VOLCANOES



8

VOLCANOES



Volcan Villarica, Chile

Vent

Pumice

Plateau

Active Volcano

Mount Etna & Vesuvius

Dormant

Extinct

Volcanic Islands

Fertile soils

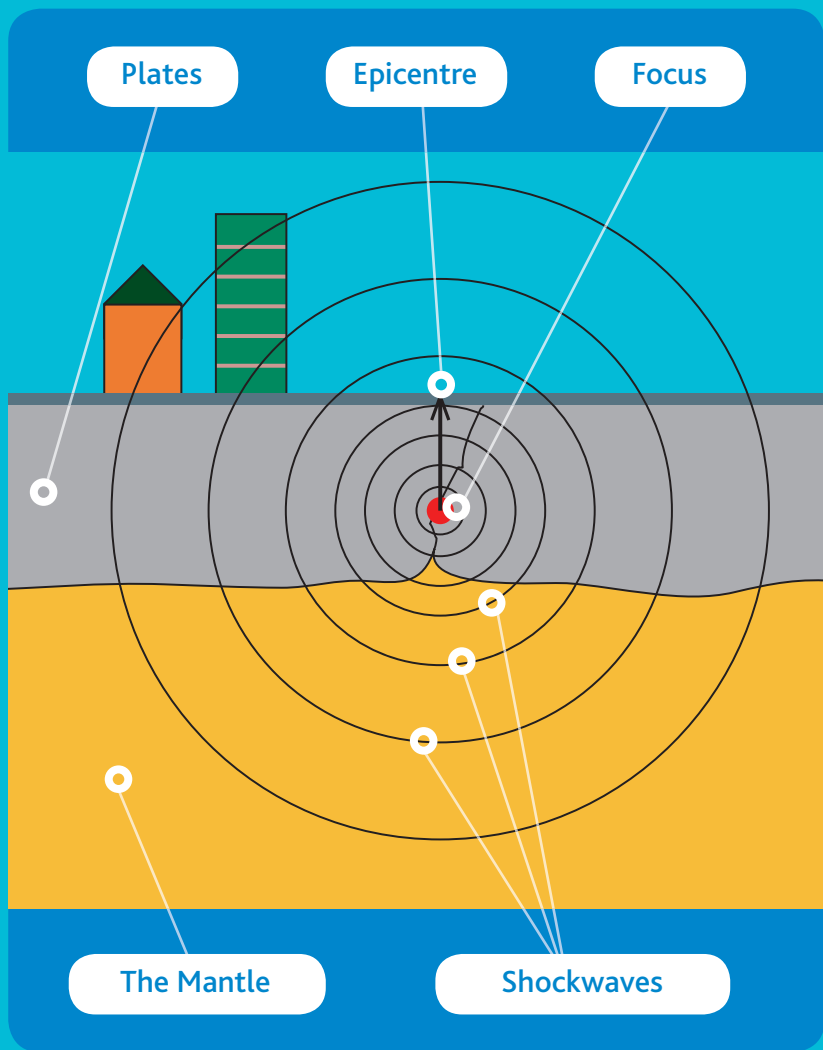
Meltwater streams

Mudflows

Geysers

9

EARTHQUAKES



10

EARTHQUAKES

Shock waves

Pacific Ring of Fire

Tsunami

Focus

Epicentre

Aftershocks

Colliding

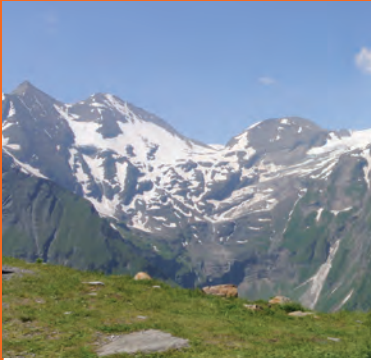
Seismograph

Richter scale

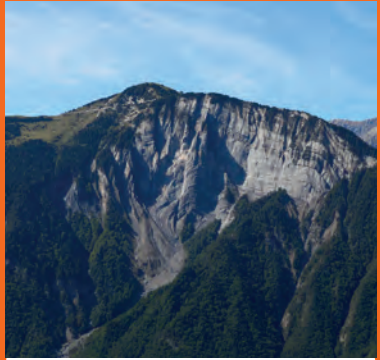
Protective measures

11

FOLD MOUNTAINS



The Alps



**Upfold /
Anticline Mountains**



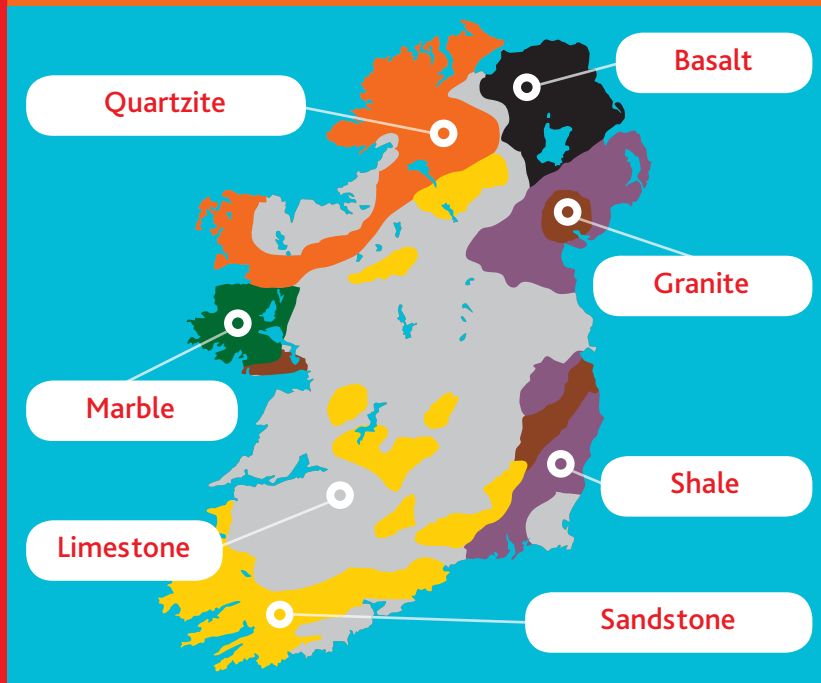
**Downfold /
Syncline Valley**



**Hydroelectric
power plant**

12 ROCKS

The Geology Of Ireland



Geology

Minerals

Sedimentary

Metamorphic

Geologist

Igneous

13

ROCKS

Igneous

Basalt

Granite



Sedimentary

Limestone

Sandstone

Shale

Coal

Decayed vegetation

Fossils



Metamorphic

Marble

Quartzite



14

MINING ROCKS



Shaft mines

Mine

Quarrying

Extraction

Technology

Quarry

15

WEATHERING



Mechanical Weathering

Exfoliation

Denudation

Freeze-thaw action

Erosion

Chemical Weathering

Oxidation

Carbonation

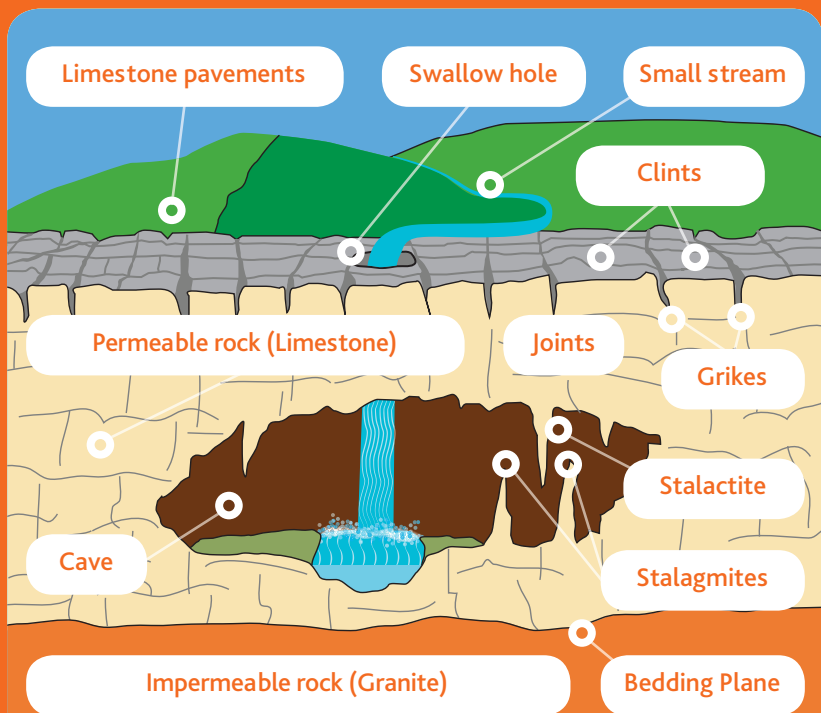
Acid rain

Pollution



16

RESULTS OF WEATHERING



17

THE BURREN



The Burren, Co. Clare

Karst landscape

Strata

Flat terraces

Permeable Rock

Limestone pavements

Impermeable

Limestone weathering

18

THE BURREN



Swallow holes

Bedding planes

Joints

Stalactites & Stalagmites

Clints & Grikes

Caves

Tourism / Conflict of interest

19

MASS MOVEMENTS



Gravity

Soil creep

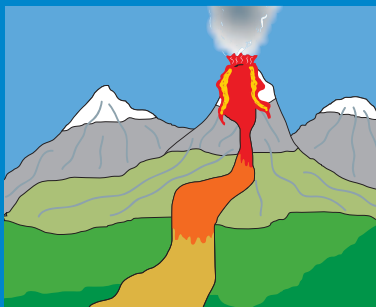
Terracettes

Landslide

Rock Fall

20

MASS MOVEMENTS



Bog burst

Mudflow

Avalanche

Volcanic Eruptions

21

IMPACT OF RIVERS



Positive interaction

Irrigation

Leisure

Hydroelectric
Station

Negative interaction

Waste Dumping

22

IMPACT OF RIVERS



Gravity

Dams

Reservoirs

Urban Areas

Habitat

23

RIVER STAGES

Youth

Interlocking spurs

Source

Steep sides



V-shaped valley

Waterfall

Watershed

Contours

Vertical Erosion

24

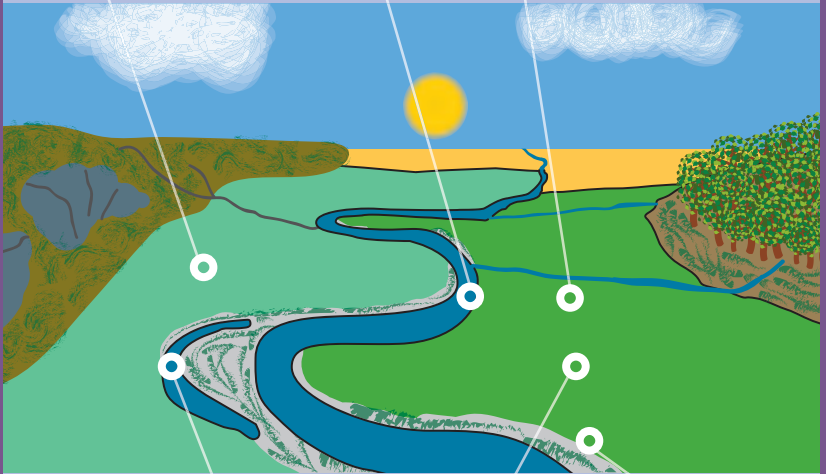
RIVER STAGES

Maturity

Meander

Deposition

Laterally



Oxbow lakes

Alluvium

Floodplain

Transportation

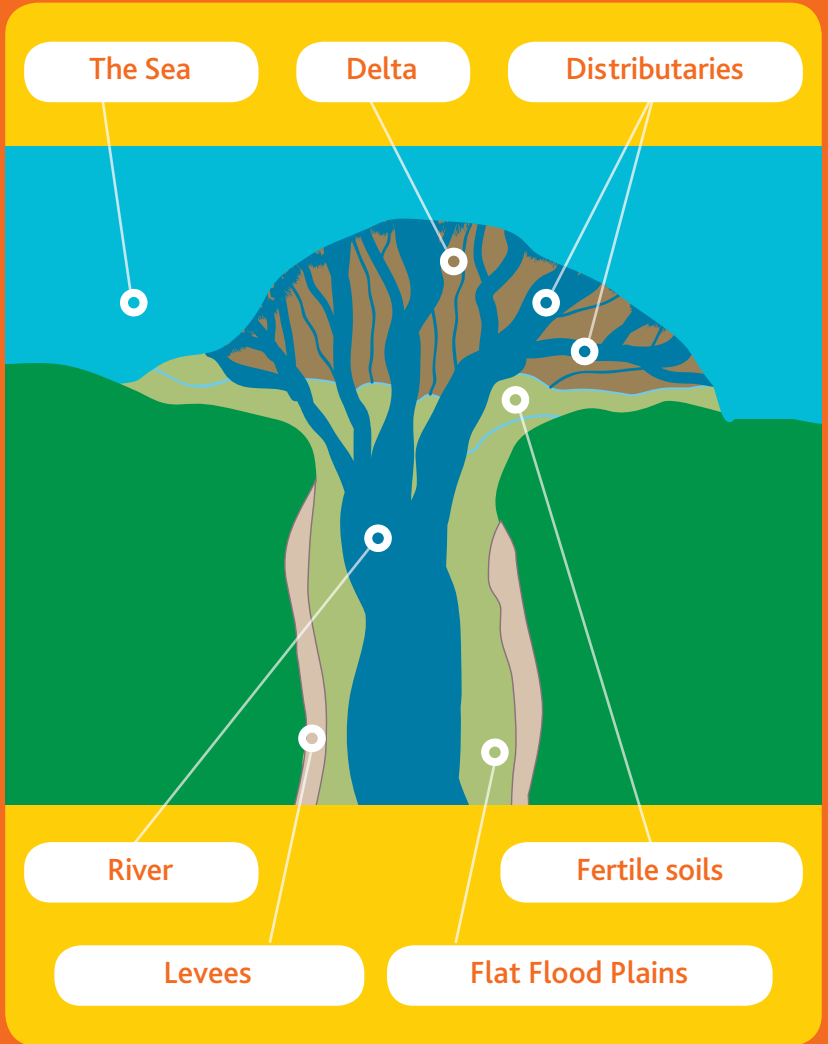
Slope

Abrasion

Solution

25

RIVER STAGES



26

RIVER STAGES

Old Age



Distributary

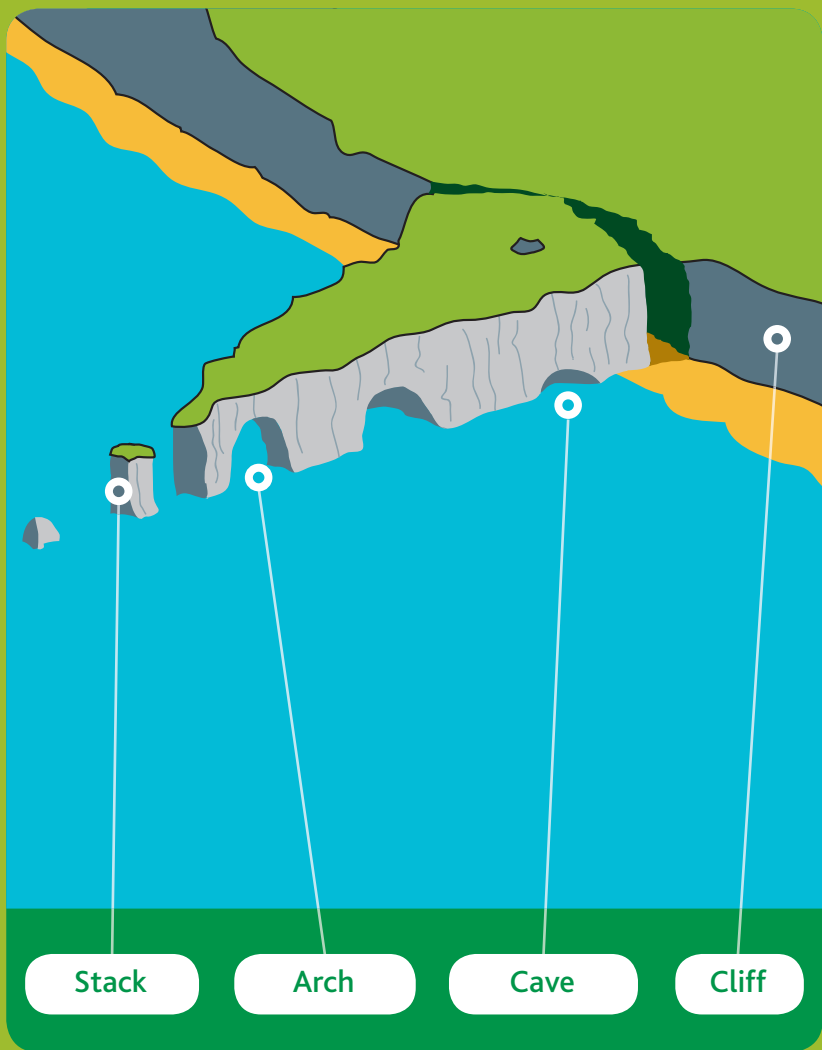
Estuary

New Orleans: Mississippi

Egypt: Nile

27

THE SEA



28

THE SEA



Shore

Sea cliff

Caves

Low tide

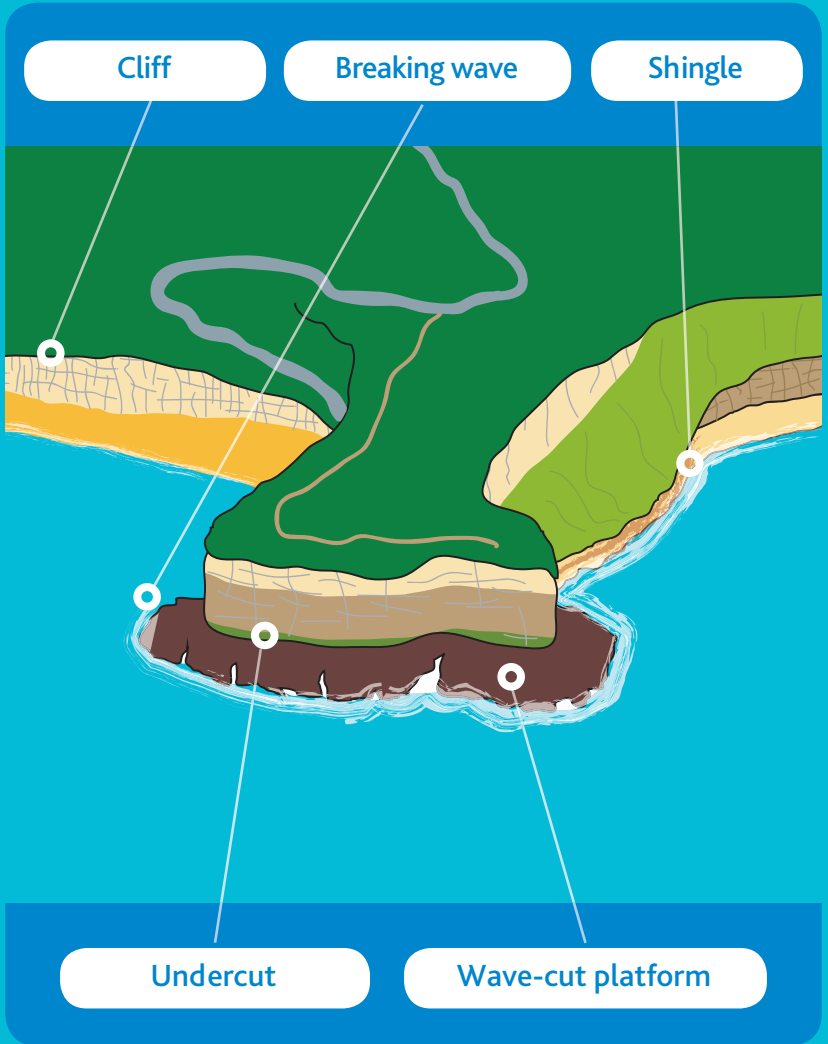
High tide

Bay

Headland

Arch

Stack



30

THE DESTRUCTIVE SEA



Swash (breaking shore waves)

Undercut

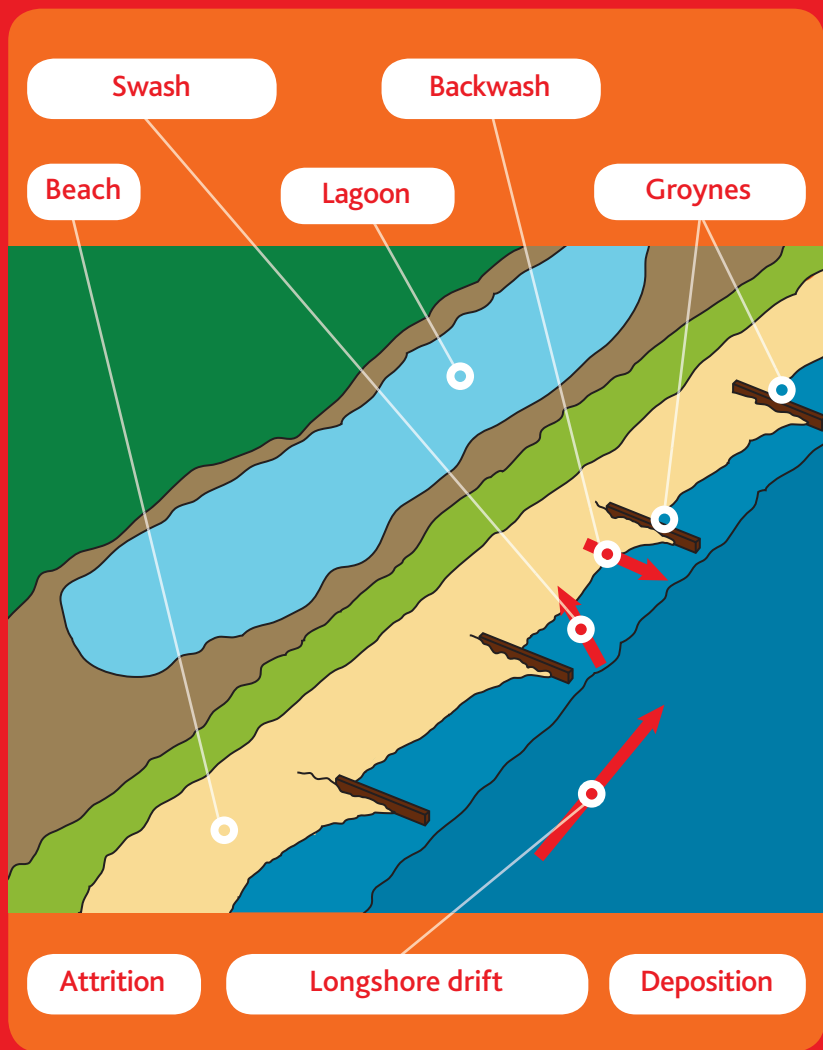
Embankment

Shingle

Wave-cut platform

31

DEPOSITION BY THE SEA



32

DEPOSITION BY THE SEA



33

HUMANS AND THE SEA



Transport

Vital link
between places

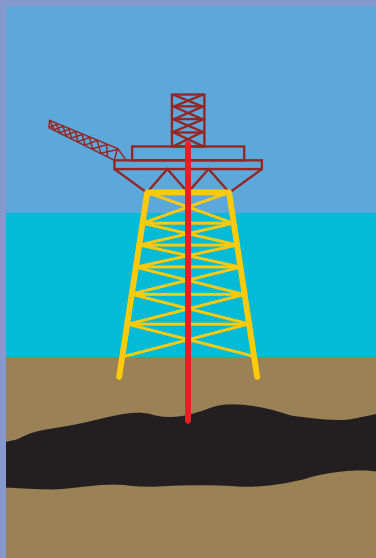
Sport

Recreation

Fishing

34

HUMANS AND THE SEA



Energy & Power

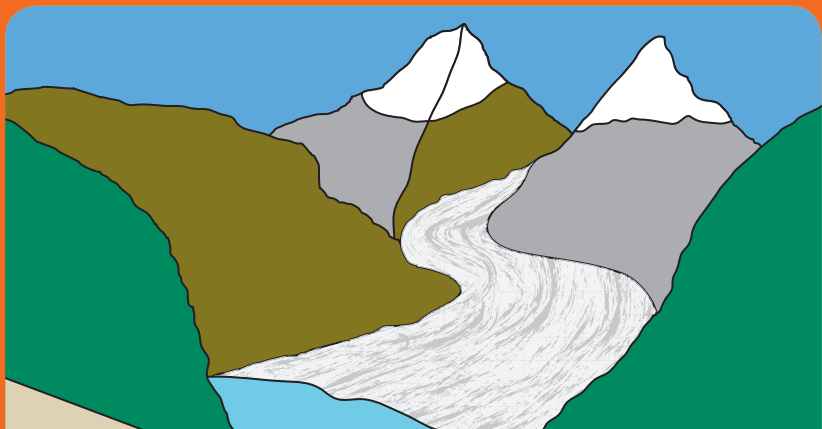
Fuel

Oil & Gas

Pollution

Oil spill

Bird kill



Moving ice

Glaciers

Plucking

Abrasion

Transport of material
by glaciers

Ice front

Drumlins

Boulder clay plain

Ice sheets

Meltwater

Outwash plain

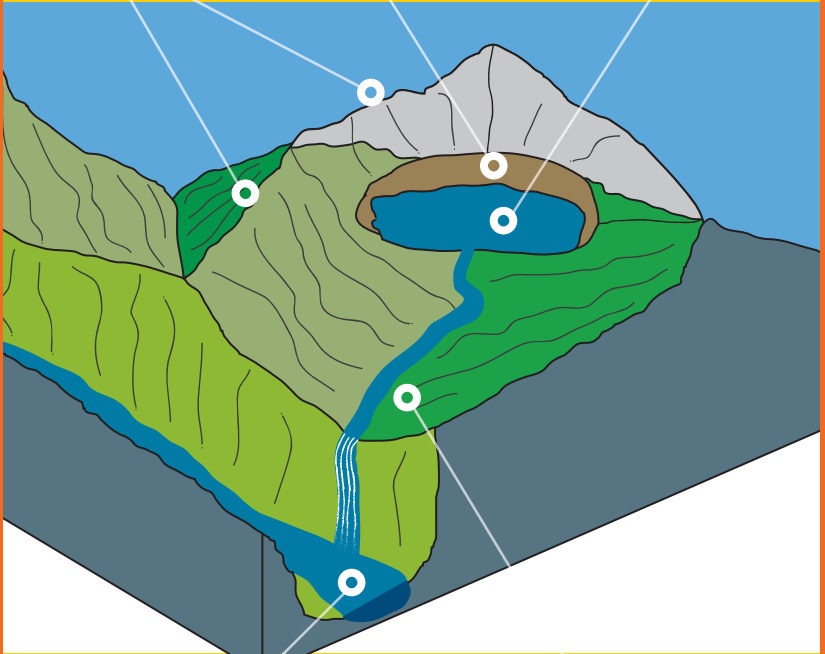
36

ICE - GLACIAL LANDFORMS

Arrête

Cirque

Tarn



Glaciated valley

Hanging valley

Ribbon lake

Crevasses